



Quick Start Guide - **READ ME!**

SC3 Models: 36/38/40mm

Thank you for being a SmartCarb® customer! Refer to this Quick Start Guide, your shop manual, and the SmartCarb® User Manual (included with your purchase or available online at smartcarb.com/support) for installation and tuning guidance.

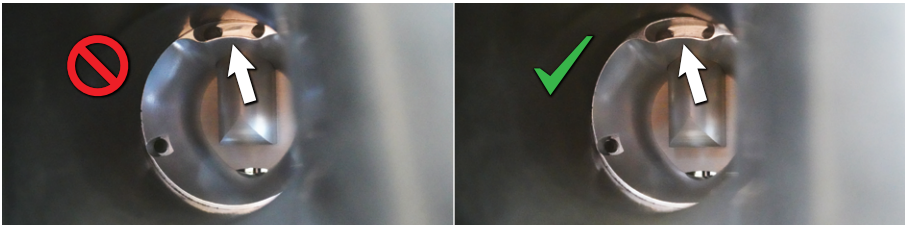
A moderate level of mechanical skill is required to properly install the SmartCarb®. If you require assistance we recommend that you ask a friend for help, see your local dealer, or contact us directly.

We assume that your vehicle is in proper working order and up to date on maintenance.

Installation

Proper installation is critical for safe operation of the vehicle and optimum performance from the fuel system. See below for recommendations:

- **Check for vent scoop obstruction** inside of the airboot or filter. Some applications have a molded-in lip or ridge that can partially block the SmartCarb® vent scoop. **Trim away any obstruction** with an x-acto knife or dremel tool to ensure proper venting.



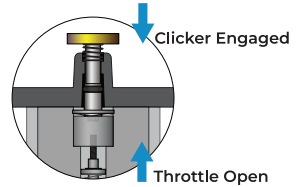
SmartCarb® venturi as viewed through the airboot.

- If applicable, trim off the two clocking/locating nibs on the intake manifold to prevent an air leak.
- Make sure the throttle cable is in good working order and that you have properly adjusted the slack.
- Use fresh fuel line between the tank and the SmartCarb® and install an in-line fuel filter (included with your SmartCarb® purchase).
- Rotate or tilt the SmartCarb® as needed, up to 15°, to **avoid contact with the engine case, shock spring, and chain.**
- Pull the choke and slowly open the fuel petcock whenever filling the SmartCarb® from empty.
- **Turn the fuel OFF** at the tank petcock while not actively riding, especially during transportation of the vehicle.

Tuning

Keep the following in mind as you begin fine tuning your SmartCarb® carburetor:

- SmartCarb® carburetors ship to you pre-tuned specifically for your application and **require a short period of riding time to break in.** Stay at or near the factory settings (below) for the first 1-2 hours before making any fine tuning adjustments, if necessary.
- Assess SmartCarb® performance with the **engine/pipe at operating temperatures and while riding**, not cold, not on the stand, not in neutral, and not around the neighborhood.
- **Tune for the best idle quality and off-idle response first.** Start by using the clicker adjuster on top of the SmartCarb® to adjust fuel flow. With the engine off, hold the throttle wide open and depress the clicker adjuster to engage the clicker mechanism in the throttle slide. Turn it Right or clockwise to go Richer (RR) and Left or counterclockwise to go Leaner (LL). Then adjust the idle set screw on the side of the SmartCarb® if necessary.
- **Keep track of your adjustments. Do not discard this guide.**



Contact

support@smartcarb.com
+1 (816) 255 2328

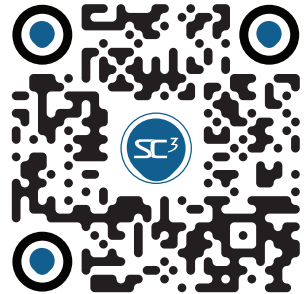


@SmartCarb
#smartcarbequipped

SmartCarb Fuel Systems, Inc
9900 E 56th St
Raytown, MO 64133
USA

Online Resources

Manuals, Videos, Guides, & More



smartcarb.com/support/

Your Factory Settings

Application: _____

Serial # _____

Metering Rod: _____

Factory Clicker Count: _____
(counterclockwise from full rich)

Idle Set Screw Setting (x): _____
(inches)

Slide/Rod Length (z): _____
(inches)

